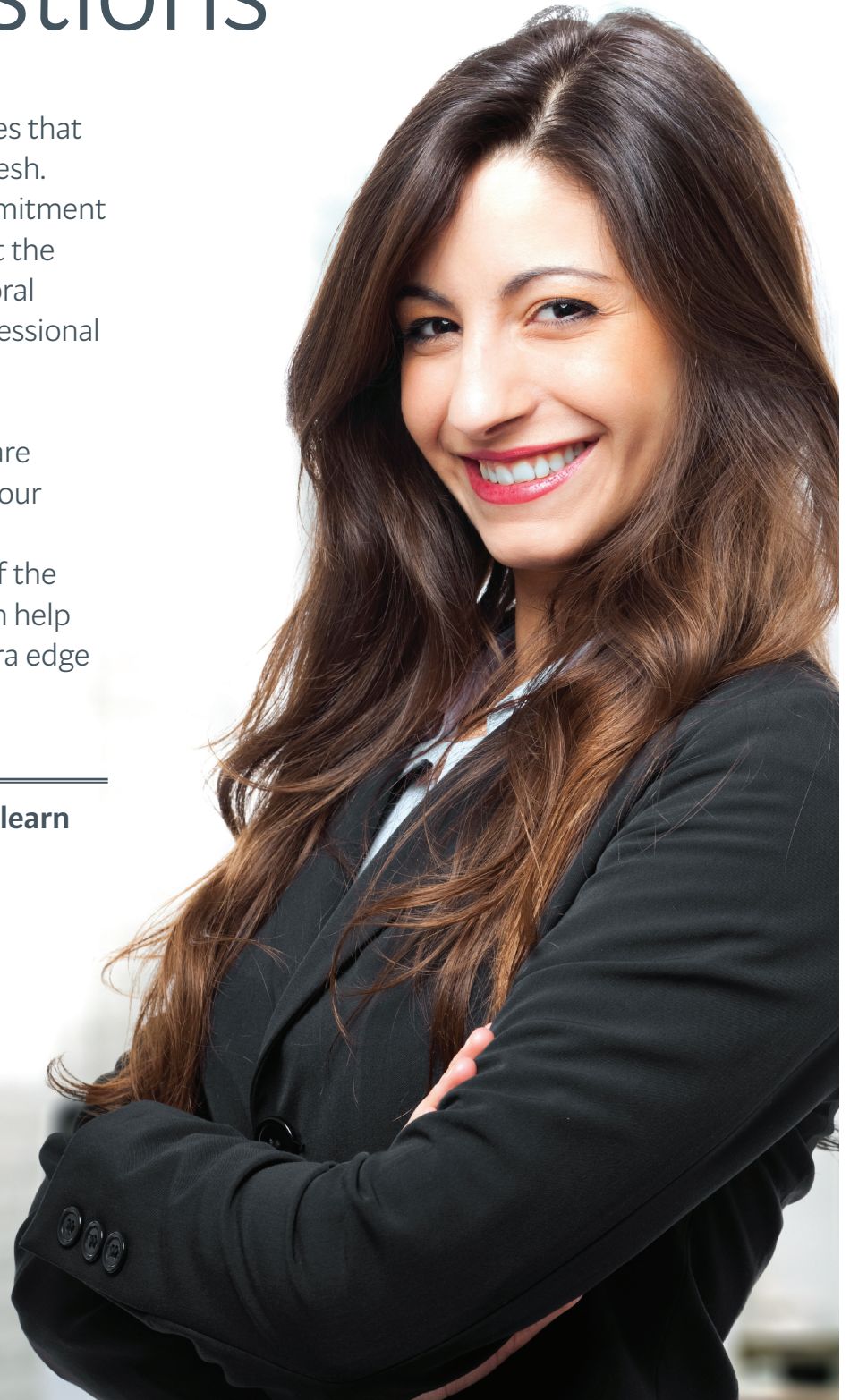


Frequently Asked Questions

A commitment to lifelong learning ensures that we keep our minds sharp and our skills fresh. University of Phoenix supports that commitment by offering a range of degree programs at the associate, bachelor's, master's, and doctoral level, as well as certificate programs, professional development, and individual courses.

The reasons to pursue higher education are many. Whether your focus is enhancing your current job performance, career mobility, personal enrichment, or a combination of the three, adding to your knowledge base can help you become a better and give you an extra edge at work and in life.

Visit phoenix.edu/lowercolumbemp to learn more.





Is University of Phoenix an online university only?

Many people think of us as only an online university, but our on-campus programs are a major part of our offerings. Your education, and the way you learn are important, so you have the choice to attend online, or at one of our campuses and learning centers throughout the country. Either way, you'll still receive the same high-quality education.

What type of programs does the University offer?

We offer degree programs from the associate to doctoral level in a range of high-demand fields, including business, education, nursing and technology.¹ We also offer professional development and continuing education courses—each which are designed in collaboration with academic and industry professionals to ensure quality, relevance and rigor.

What if I already have some college credits, training or certifications?

If you already have college credits, you may be able to earn your degree faster and save on tuition by applying your eligible credits towards your degree program. You can also explore our Prior Learning Assessment program to see if your workplace experience or training will transfer into college credit.²

How long does it take to complete a degree?

Our students typically complete their undergraduate degree in four years or less, depending on the number of previously earned and applicable credits. Your Enrollment Advisor will be able to offer you a more accurate estimate of the time required to complete a specific degree program. By offering continuous enrollment, you can enroll year-round—many courses start every week.

What financial benefits are available to me as a Lower Columbia College ?

As part of the commitment Lower Columbia College has made to workforce development, you are eligible for a special **10% tuition reduction** when enrolling in any degree program, certificate program or individual course at University of Phoenix. You will also receive a **100% fee waiver** for Prior Learning Assessment.

Are the same benefits available to me if I am already enrolled?

Absolutely! If you are currently a University student you can easily identify yourself using the eCampus site. To receive the tuition reduction, just log into eCampus, select the Account tab, and click on the Employer/Tribal Benefits Program link. Then select Lower Columbia College and answer the questions.

Where can I get more information?

If you have any questions, call 866.354.1800 or visit phoenix.edu/lowercolumbemp to learn more about your exclusive benefits.

¹ While widely available, not all programs are available in all locations or in both online and on-campus formats. Please check with a University Enrollment Advisor.

² Certain states limit cumulative degree program credits awarded through Prior Learning Assessment. The PLA process applies only to associate or bachelor's degree candidates and awarded credits are limited to elective or general education requirements.

University of Phoenix is accredited by The Higher Learning Commission and is a member of the North Central Association. University of Phoenix was placed on Notice by The Higher Learning Commission, effective June 27, 2013. Notice is a Commission sanction indicating that an institution is pursuing a course of action that, if continued, could lead it to be out of compliance with one or more Criteria for Accreditation. An institution on Notice remains accredited. At the end of the Notice period, The Higher Learning Commission Board of Trustees may remove the sanction, place the institution on Probation if the identified concerns have not been addressed, or take other action. For additional information, contact The Higher Learning Commission, ncahlc.org

Use of the words partner or partnership is not intended to create a legal partnership. The University's Central Administration is located at 1625 W. Fountainhead Pkwy., Tempe, AZ 85282. Online Campus: 3157 E. Elwood St., Phoenix, AZ 85034.